



# Crafting Your Digital Future.



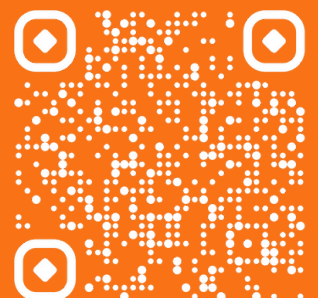
Custom Software Development for  
Enterprise Growth.

© Copyright 2025 Rivendell Co., Ltd. All Rights reserved.

**200+** Successful Projects in Myanmar & SEA

**5M+** End Users Served

**99.98%** Uptime on Enterprise Deployments



[rivendellmm.com](http://rivendellmm.com)



# Content

<b>YOUR STRATEGIC PARTNER</b>	<b>02</b>
<b>THE PROVEN RESULTS</b>	<b>03</b>
<b>OUR SOLUTION SERVICES</b>	<b>04</b>
<b>IT INFRASTRUCTURE SERVICE</b>	<b>05</b>
<b>E-SUBMISSION PORTALS</b>	<b>06</b>
<b>PROJECT PROGRESS MONITORING SYSTEMS</b>	<b>07</b>
<b>BORDER CONTROL &amp; IDENTITY MANAGEMENT</b>	<b>08</b>
<b>WEB PORTAL SYSTEMS</b>	<b>09</b>
<b>E-LEARNING MANAGEMENT SYSTEM</b>	<b>10</b>
<b>LAST MILE DELIVERY OPERATION APPLICATION</b>	<b>11</b>
<b>E-COMMERCE WEBSITES &amp; MARKETPLACES</b>	<b>12</b>
<b>PREMIUM CONTENT &amp; SUBSCRIPTION PLATFORMS</b>	<b>13</b>
<b>VAS &amp; TELECOM PAYMENT INTEGRATED PORTALS</b>	<b>14</b>
<b>E-LIBRARY SYSTEMS</b>	<b>15</b>
<b>DOCUMENT MANAGEMENT &amp; ARCHIVING SYSTEMS</b>	<b>16</b>
<b>E-MEMO &amp; E-NOTE WORKFLOW SYSTEMS</b>	<b>17</b>
<b>OUR UNIQUE ADVANTAGE</b>	<b>18</b>
<b>OUR ENGAGEMENT MODEL</b>	<b>19</b>
<b>REACH US OUT</b>	<b>20</b>

# Your Strategic Partner

In today's complex digital landscape, growth is not just about adopting new technology—it's about weaving it into the very fabric of your business. It requires more than a vendor; it demands a partner with the wisdom to architect the right solution and the craftsmanship to build it to last.

## WELCOME TO RIVENDELL

We are a premier technology partner for private sector leaders, dedicated to building the powerful, custom software solutions that drive efficiency, unlock new opportunities, and create a resilient foundation for your future. We see technology as a craft, and we are masters of our trade.

Our mission is to be the catalyst that transforms your business vision into a high-performance reality, serving as your single, reliable partner to eliminate the complexity and risk of your digital transformation journey. We don't just deliver code; we deliver complete, working business systems built on a foundation of internationally recognized standards and deep, practical experience.

### Our Commitment, Certified:

**ISO 9001:2015 - Quality Management System:** This certification is our promise to you. It validates that our entire process—from project management to client consultancy and development—is structured to consistently meet and exceed your expectations, ensuring the highest quality in every solution we deliver.

**ISO/IEC 27001:2022 - Information Security Management System:** When you partner with us, your data and intellectual property are paramount. This certification confirms that we have implemented rigorous, internationally recognized controls to manage cyber threats, protect sensitive information, and ensure the integrity and confidentiality of your data at all times.



# The Proven Results



30+

**Enterprise & National  
Platforms Deployed**

From core banking middleware to national e-government portals.



210+

**Total Project  
Delivered**

From core banking middleware to national e-government portals.



15,000+

**Professionals  
Up-skilled Via LMS**

Via our custom-built Learning Management Systems (LMS).



**Dual ISO**

**A Foundation of  
Trust & Quality**

ISO 9001:2015 (Quality Management)  
ISO 27001:2022 (Information Security)



8

**Key Industries  
Transformed & more.**

Logistics, Banking, Healthcare,  
Telecom, Retail, Manufacturing & more.



100%

**Turnkey Project From  
concept to deployment**

From initial concept to final  
deployment and support.



5 Million+

**Citizen & Business  
Interactions Managed**

Securely processing  
millions of service  
requests, payments,  
licenses, and user  
records across our  
platforms.

## Our Clients



# Our Solution Services

Web | Mobile | SaaS Development



## Custom Web Application Development

- Operations Management Systems (OMS): We build comprehensive, web-based systems to run your entire operation, like the MGL OMS Web built on the robust PHP Laravel Framework.
- Business & Customer Portals: We create secure, customer-facing web portals for service delivery, content management, and e-commerce.
- Content Management Systems (CMS): Our portals feature easy-to-use back-end systems that allow your team to manage content without requiring deep technical expertise.



## Native Mobile Application Development (iOS & Android)

- Workforce Enablement Apps: We build powerful apps that your staff can use in the field to improve efficiency and data accuracy, such as the native Android app that helps courier staff manage deliveries.
- Customer-Facing Apps: We create polished, intuitive apps for your customers to engage with your services, available on both the Apple App Store and Google Play Store.
- From initial UI/UX design to final submission to the app stores, we manage the entire lifecycle to deliver applications that are both powerful and a pleasure to use.



## Software as a Service Development

Beyond solving your internal challenges, do you have a vision for a new technology product to bring to market? Rivendell is the ideal partner to turn that vision into a revenue-generating reality. We specialize in developing scalable, multi-tenant Software-as-a-Service (SaaS) and White-Label Platforms.

This is where we act as a true catalyst for innovation, providing the end-to-end development capabilities to launch a complete, monetized digital business. Our Platform Development Expertise Includes

# IT Infrastructure Service

## The Power Behind the Platform

Great software is built on an unshakable foundation of security, reliability, and scalability. At Rivendell, we are not just application developers; we are expert infrastructure architects who ensure your systems are robust, secure, and built for the future.

Our technical mastery covers the full spectrum of foundational technology, giving you a single, accountable partner for your entire digital ecosystem.



### Secure Infra & Data Center Solutions

- We build powerful platforms that allow you to launch your own branded services quickly and cost-effectively. Our work on the
- TuTa.App e-learning platform enables our clients to deploy their own online academies under their own brand, complete with web, mobile, and informational sites.



### Enterprise Virtualization & Private Cloud

- Expert deployment of VMware and the global industry standard for server virtualization.
- Drastic hardware cost reduction by consolidating multiple server roles onto fewer physical machines.
- Creation of flexible and scalable private cloud environments for production, testing, or training.



### Secure Networking & Perimeter Defense

- Deployment of top-tier, Next-Generation Firewalls from global vendors
- FortiGate and Palo Alto to secure your network perimeter.
- Implementation of enterprise-grade Layer switching, structured cabling, and VLAN setup for optimal performance and security.



### Systems Integration & Payment Gateways

We build it all: the sophisticated web portal, the native iOS and Android mobile apps, the secure back-end infrastructure, and the administrative tools needed to manage the entire system.

# e-Submission Portals

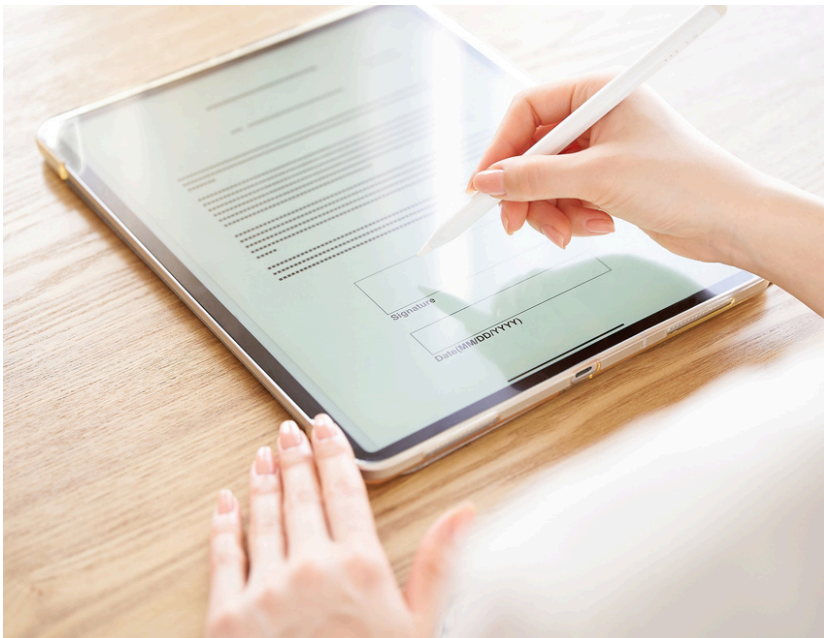
## White Label

Configurable portals for licenses, permits, certifications, and vendor onboarding.

Ideal customers: Regulated industries (FMCG, healthcare), franchising, procurement-heavy enterprises.

Top outcomes

- Fewer counter visits and errors
- Transparent tracking & notifications
- Auto-issued digital certificates



- Integrations: Payment gateways, KYC, core systems, DMS.
- Deployment: Cloud/on-prem; audit & reporting.
- Timeline: 6–10 weeks.
- Commercials: Per-transaction or license + AMC.
- White-label: Branded portal & certificates.
- Add-ons: Post-market surveillance, inspections, BI.

## Key modules

- Form builder, document upload, validation
- Workflow & SLAs, staff consoles, reviews
- Fee calculation, online payment, receipts
- Certificate generator, QR/Barcode verification
- Applicant dashboard: status, messages, appeals

# Project Progress White Label Monitoring Systems

Outcome-driven portfolio monitoring with milestones, budgets, risks, and geospatial views.  
 Ideal customers: Developers, EPC/infra firms, PMOs, NGOs.

Top outcomes

- Timely, data-driven decisions
- Reduced slippage & budget overruns
- Executive visibility via dashboards



- Deployment: Cloud/on-prem; audit; role-based access.
- Timeline: 6–10 weeks.
- Commercials: Per-project/user SaaS or license + AMC.
- White-label: Branded PMO portal & report templates.
- Add-ons: OKR layer, contractor vendor portal, ESG tracker.

## Key modules

- Project setup, WBS, milestones, dependencies
- Budget vs actuals, commitments, invoices
- Risk/issue registers, change control
- Field data capture (mobile), photos, geo-tagging
- Dashboards & reports; API export to BI

# Border Control & Identity Management White Label

Biometric enrollment & verification, smart ID/access, and attendance for large workforces or secured campuses.

Ideal customers: Airports, SEZ/industrial parks, large enterprises, universities, healthcare networks.

Top outcomes

- Accurate identity & access control
- Reduced fraud & tailgating
- Fast lane entry & compliance records



- Deployment: On-prem or hybrid; HSM/PKI; privacy controls.
- Timeline: 10–16 weeks (depending hardware).
- Commercials: Platform + hardware + AMC.
- White-label: Branded cards, portals, and verifier UIs.
- Add-ons: Visitor management, e-gate, travel doc verification.

## Key modules

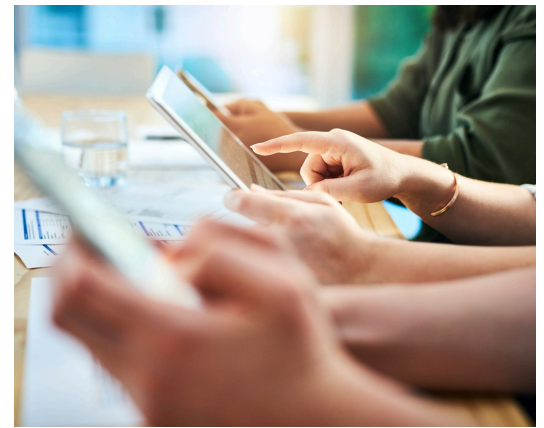
- Enrollment (face/fingerprint/iris), deduplication
- ID repository, roles, revocation lists
- Smart ID cards/NFC, turnstile integration
- Verification kiosks & mobile verifiers
- Attendance & shift sync to payroll
- Real-time dashboards & alerts

# Web Portal Systems White Label

Multilingual, mobile-first portals for corporate, customer, partner, or community use.  
Ideal customers: Corporates, universities, associations, hospitals, real estate.

Top outcomes

- Single digital front-door
- Self-service & reduced support load
- Consistent brand experience across devices



- Deployment: Cloud/on-prem; CDN; SEO/Schema; WCAG.
- Timeline: 4–8 weeks (template) / 8–12 weeks (custom).
- Commercials: SaaS or license + AMC.
- White-label: Full theme kit, domain, language packs.
- Add-ons: Mobile apps, microsites, partner portals.

## Key modules

- CMS & page builder, roles & permissions
- Forms, knowledge base, FAQs, chat hooks
- Directory, events, bookings, newsletters
- Search, personalization, notifications
- Analytics & A/B testing

# e-Learning White Label Management System

Corporate-grade LMS—courses, assessments, certificates, and virtual labs—under your brand. Ideal customers: Enterprises (compliance), training providers, universities, NGOs.

Top outcomes

- Faster onboarding & compliance tracking
- Skills visibility via analytics
- Mobile-first learning adoption



- Deployment: Cloud/VPC or on-prem; multi-tenant; SSO/SAML.
- Timeline: 6–10 weeks.
- Commercials: Per-learner SaaS or license + AMC.
- White-label: Custom domain, colors, emails, mobile apps with your publisher account.
- Add-ons: CPD marketplace, micro-learning, gamification, LRS.

## Key modules

- Course builder (SCORM/xAPI), quizzes, assignments
- Virtual lab/sandbox (IT & STEM), session scheduling
- Certificates & CE credits, proctoring options
- HRIS/SSO integration, org hierarchy, cohorts
- Dashboards: progress, completion, skill matrix

# Last Mile Delivery White Label Operation Application

End-to-end, brandable delivery stack—OMS + Driver App + Customer App + Merchant Portal—with live tracking and COD/digital payments.

Ideal customers: Express & parcel, e-commerce sellers, grocery/food, 3PLs, pharma distribution.

Top outcomes

- 20–40% faster dispatch & route utilization
- Real-time visibility (ETA, proof-of-delivery)
- Lower failed deliveries & COD leakage



- Deployment & security: Cloud/VPC or on-prem; SSO/OAuth2; audit logs; role-based access; DPA/PDPA-ready.
- Timeline (typical): 8–12 weeks MVP → 4–8 weeks scale.
- Commercials: SaaS (tiered shipments) or license + AMC.
- White-label: Your logo, colors, domain, app store publisher; custom modules per vertical.
- Add-ons: Returns & exchange, dark-store picking, rider incentive engine, BI dashboards.

## Key modules

- Operations Web OMS: orders, SLA rules, capacity, zones, hubs
- Driver App (iOS/Android): tasks, navigation, POD, cash tally
- Customer App/Portal: track shipment, reschedule, support
- Merchant Portal: bulk upload, webhooks/API, billing
- Dispatch & Route: auto-assignment, geofencing, route suggestions
- Finance: COD reconciliation, invoicing, settlement reports

# E-Commerce Websites & Marketplaces White Label

Launch a branded, multi-device storefront or multi-vendor marketplace with secure checkout and local payments.

Ideal customers: Retail, D2C brands, B2B wholesalers, lifestyle & media shops.

Top outcomes

- Faster go-to-market with enterprise governance
- Higher conversion via localized UX and payments
- Unified catalog & order management across channels



- Deployment: Headless or full-stack; PWA; SEO-ready; CDN.
- Timeline: 6–10 weeks single-brand; 10–14 weeks marketplace.
- Commercials: SaaS + transaction fee or license + AMC.
- White-label: Theme kit, domain, language packs, custom components.
- Add-ons: Loyalty, social commerce, live shopping, B2B price lists.

## Key modules

- Storefront CMS, product/Catalog, variants & bundles
- Cart & checkout, coupons, wallets, subscriptions
- Seller Center (for marketplace): onboarding, KYC, commissions
- OMS: orders, returns, fulfillment, click-and-collect
- Analytics: funnels, RFM cohorts, merchandising insights

# Premium Content & White Label Subscription Platforms

Monetize premium video/audio/articles with subscriptions, pay-per-view, and community—web + mobile apps.

Ideal customers: Creators, publishers, studios, sports, education media.

Top outcomes

- New recurring revenue streams
- Reduced churn with community & perks
- Secure streaming with DRM & watermarking



- Deployment: Multi-tenant core with branded tenants; app store submission included.
- Timeline: 8–12 weeks pilot.
- Commercials: Rev-share or platform fee + gateway costs.
- White-label: Fully branded UX, domain, and app listings per creator/network.
- Add-ons: Tips, merch, gated communities, affiliate program.

## Key modules

- Creator Console: uploads, pricing, bundles, paywalls
- Subscriber Apps (iOS/Android/Web): feed, collections, chat
- Payments: cards, bank, telco wallets
- Rights/Access: DRM, tokenized links, watermarking
- Analytics: MRR, LTV, cohort churn, content heatmaps

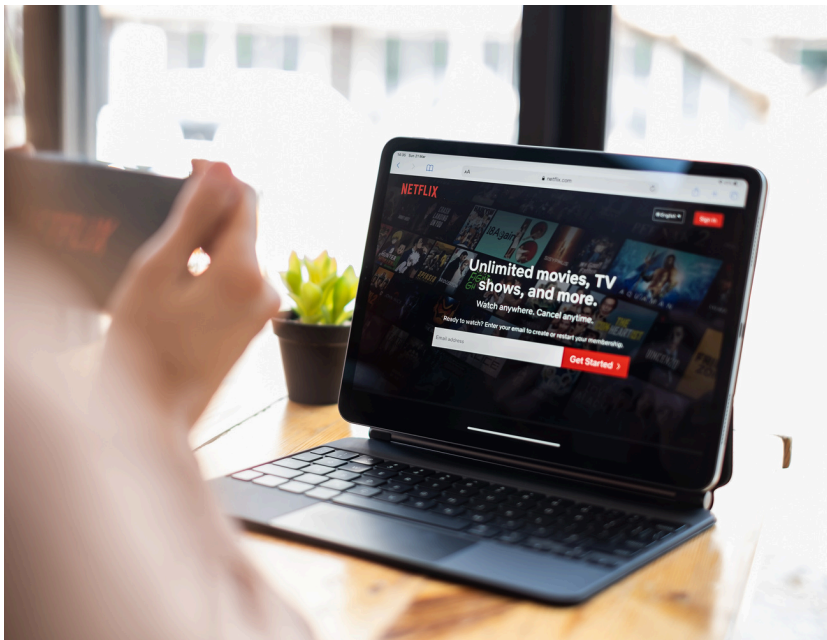
# VAS & Telecom Payment Integrated Portals White Label

Launch content/service portals with direct carrier billing and subscription orchestration.

Ideal customers: Media, edu-content, utilities, lifestyle services.

Top outcomes

- Higher conversion via one-tap telco billing
- Rapid partner launches via templates
- Transparent settlement & anti-fraud



- Deployment: Telco-grade audit, rate-limit controls, SLA.
- Timeline: 6–9 weeks (per MNO).
- Commercials: Setup + monthly + per-subscriber fee.
- White-label: Co-branded or fully white-label portals.
- Add-ons: Zero-rating, family plans, sponsored data.

## Key modules

- Subscriber management, trials, upsell/cross-sell
- DCB integration (MNOs), OTP, consent logs
- Content delivery (video/audio/text), entitlements
- Partner console: campaigns, bundles, payouts
- Settlement & dispute management

# e-Library Systems

## White Label

A modern digital library with cataloging, lending, DRM, and multi-format content under your brand. Ideal customers: Universities, corporates, publishers, research orgs.

Top outcomes

- Centralized knowledge access
- Policy-driven lending/usage
- Searchable, tagged archives



- Deployment: Cloud or on-prem; role-based access; audit trail.
- Timeline: 6–10 weeks.
- Commercials: SaaS per collection size or license + AMC.
- White-label: Fully branded portals & reader apps.
- Add-ons: Institutional repository, digitization pipeline, AI search.

## Key modules

- Catalog (MARC/Dublin Core), acquisitions, serials
- Reader apps (web/mobile), DRM & watermarking
- Lending/hold policies, citations, notes
- Advanced search, OCR, recommendations
- Admin analytics: usage, holdings, demand

# Document Management & Archiving Systems White Label

Enterprise DMS with versioning, e-sign, retention, and long-term archiving.

Ideal customers: Banks, insurers, manufacturers, healthcare, law firms.

Top outcomes

- Controlled document lifecycle & compliance
- Faster retrieval and collaboration
- Reduced storage risk and audit effort



- Deployment: Cloud/on-prem; encryption at rest/in transit; key management.
- Timeline: 8–12 weeks.
- Commercials: Per-user SaaS or license + AMC.
- White-label: Branded UI, domains, doc templates.
- Add-ons: e-form ingestion, AI classification, data loss prevention (DLP).

## Key modules

- Repositories & folders, metadata schemas, OCR
- Versioning, check-in/out, workflows, e-sign
- Records management, retention/disposition
- Audit trails, legal holds, chain-of-custody
- Search, redaction, export, backup to NAS/S3

# e-Memo & e-Note White Label Workflow Systems

Digitize internal approvals with structured notes, attachments, routing, and audit.

Ideal customers: Conglomerates, banks, telcos, large SMEs.

Top outcomes

- Cycle time cut for approvals
- Standardized decision trails
- Remote, mobile sign-off



- Deployment: Web + mobile; SSO; retention & export.
- Timeline: 4–8 weeks.
- Commercials: Per-seat SaaS or license + AMC.
- White-label: Branded templates & URLs, custom roles.
- Add-ons: OCR extraction, approval analytics, risk scoring.

## Key modules

- Template-driven memos/notes, attachments
- Routing rules, escalations, SLAs, delegation
- Comments, mentions, tasks, reminders
- Digital signature, policy checks, audit logs
- Dashboards: backlog, TAT, bottlenecks

# Our Unique Advantage

A low-angle photograph of a modern, multi-story building with a glass and metal facade, set against a clear blue sky.

## Unmatched Public Sector Experience

We hold a deep and extensive portfolio of successful, large-scale projects with a wide range of Myanmar government ministries. We are a known and trusted entity.

## End-to-End Turnkey Solutions

We provide a single point of accountability for the entire project lifecycle. We manage everything from strategic consultation and infrastructure design to software development, deployment, and long-term 24/7 operational maintenance.

## Local Presence, Global Standards

As a Myanmar company, we possess an intrinsic understanding of the local context, language, and regulatory landscape. This local expertise is combined with our commitment to implementing global best practices in technology, security, and project management.

## Proven Expertise in Mission-Critical Systems

Our successful delivery of high-stakes systems for National ID , Immigration Control , and Election Management demonstrates our unique capability to handle the nation's most sensitive data with the highest levels of security and reliability.

# Our Engagement Model

A successful outcome is the result of a disciplined process. At Rivendell, we guide our partners through a clear, five-phase engagement model that ensures clarity, collaboration, and success at every stage of the journey. This structured approach eliminates risk and guarantees that the final product is perfectly aligned with your business goals.



1

## Consultation & Discovery

We begin with a detailed consultation to deeply understand your organization's goals, operational challenges, technical needs, and budget constraints.

2

## Prototyping & Solution Design

Our experts design a comprehensive infrastructure and application plan. We often create a visual prototype so you can see and feel how the application will work before full development begins, ensuring alignment from the start.

3

## Agile Development & Implementation

We build your solution in iterative cycles ("sprints"). This agile methodology allows you to provide feedback and make adjustments along the way, ensuring the project stays on track and responsive to your evolving needs. Our engineering teams work in parallel to procure and install the underlying infrastructure.

4

## Deployment & Training

We handle the complete deployment of the application onto secure, reliable infrastructure. We then conduct thorough training for your staff to ensure a smooth transition and empower them to manage and operate their new system effectively.

5

## Ongoing Support & Maintenance

Our partnership doesn't end at launch. We believe in building lasting relationships and offer long-term support and maintenance contracts to ensure your application remains secure, updated, and continues to deliver business value for years to come.



# Reach Us Out

We are ready to grow our business better and help you be the best one

-  3260, Bagan St, Ottarathiri, Naypyitaw, 15015
-  hello@rivendellmm.com
-  rivendellmm.com
-  +95 9 740020530